

HIGHWAY BUILDING COMMITTEE:

21 March 2016

A meeting of the Highway Building Committee was called to order by Chairman William Scott at 5:00 pm on March 21, 2016 at the Highway Department Office.

Present: William Scott, Robert Brown, Dave Hanlon, Kevin McCarthy, Mark Vess, Kenneth Mitchell, Rich LaCamera, John Murray and Daniel Tenney representing Weston & Sampson.

Motions to approve the minutes of February 29 and March 24, 2016 were approved unanimously.

General Discussion:

Reviewed updated project progress schedule. (Attachment # 10)

Reviewed preliminary space allocation costs. (Attachment # 11)

Agreed that a special presentation of the project be made to the selectmen on Tuesday 18 April.

Need an outline of the additional property to be given to the Town by Hubbell.

Discussed ways to reduce the cost of proposed salt shed.

Discussed option of moving wash bay to outside location to reduce cost.

Discussed budget alternatives for fences, gates, bulk bins and fuel depot relocation.

Reviewed updated equipment list and agreed that Bob Brown and Dave Hanlon should meet with James Fair, Weston & Sampson's Equipment Engineer, to refine the equipment list. (Attachment # 12)

Motion: to adjourn by Kevin McCarthy second by Bill Scott.

Adjournment:

Date of next meeting: April 4, 2016

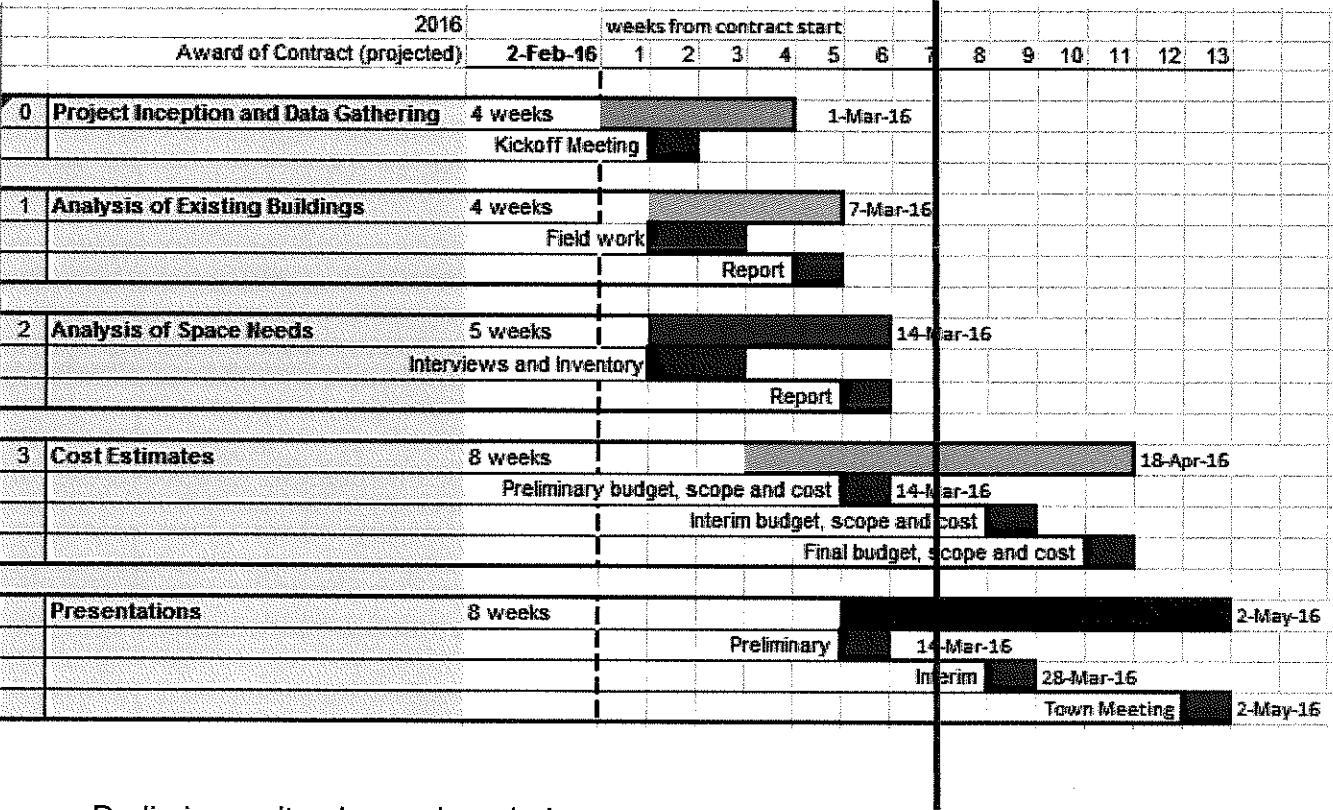
Minutes respectfully submitted by John Murray, Secretary.

2016 APR 11 A 11:33
RECEIVED
TOWN CLERK
HANSON, MA

PROJECT PROGRESS MEETING

Monday, March 21, 2016

- Overview of progress
- Schedule



- Preliminary site plan and renderings
- Cost Projections
- Site Costs and Optional Cost items
- Site – septic system
- Next Steps

HANSON HIGHWAY DEPARTMENT
PRELIMINARY SPACE ALLOCATION AND COSTS

ATTACHMENT
#11
updated 14-Mar-16
16-Mar-16

OPERATIONAL AREAS

	Programmed	Proposed Allocation	
	SF	Building 1	Building 2
Vehicle Maintenance	4,857	5,000	
Wash Bay	1,346	1,500	
Shops	950	1,100	
Administration	1,137	1,250	
Employee Facilities	1,615	1,750	
Utility	372	372	
Total Interior	10,276	10,972	
Vehicle Storage	5,710	3,000	5,710
Equipment Storage	*		2,800
	15,986	13,972	8,510
			22,482

A			
Programmed area only			
15,986 SF			
New Construction			
SF		\$/SF	
Vehicle Maintenance	4857	189 \$	917,897
Wash Bay	1346	357 \$	480,522
Shops	950	189 \$	179,626
Administration	1137	269 \$	305,772
Employee Facilities	1615	269 \$	434,327
Utility	372	149 \$	55,428
Vehicle Storage	5710	149 \$	850,779
Equipment Storage	2800	149 \$	417,200
		\$	3,641,551
Salt Shed	7800	65 \$	507,000
		\$	4,148,551

less wash bay* \$ 3,668,029

less salt shed \$ 3,641,551

less wash bay and salt shed \$ 3,161,029

* wash bay SF 1500 300 \$ (450,000)

storage SF 1500 120 \$ 180,000

net reduction \$ (270,000)

(For renovated space, wash bay is replaced by additional storage)

B		
full available area		
22,482 SF		
Renovation		
\$/SF		
	160 \$	800,000
	300 \$	450,000
	160 \$	176,000
	175 \$	218,750
	175 \$	306,250
	120 \$	44,640
	120 \$	1,045,191
	120 \$	336,000
	\$	3,376,831
	65 \$	507,000
	\$	3,883,831

\$ 3,613,831

\$ 3,376,831

\$ 2,926,831

C		
Programmed area only		
15,986 SF		
Renovation		
\$/SF		
	160 \$	777,056
	300 \$	403,800
	160 \$	152,064
	175 \$	198,923
	175 \$	282,555
	120 \$	44,640
	120 \$	685,191
	120 \$	336,000
	\$	2,880,228
	65 \$	507,000
	\$	3,387,228

\$ 3,144,948

\$ 2,880,228

\$ 2,476,428

D	
Composite Renovation	
Average of B and C	
\$	3,635,530

\$ 3,379,390 less wash bay*

\$ 3,128,530 less salt shed

\$ 2,701,630 less wash bay and salt shed

BASE BUILDING COSTS ONLY

Not Included:

Site development

Fuel system relocation

Industrial Equipment

Lubrication system

Mezzanines

Escalation

Contingency

Soft Costs

ATTACHMENT #12

HANSON MA Highway Department						
Location	EQ number	Description	Quantity	Spec Number	Equipment Type	BUDGET
HEAVY DUTY VEHICLE LIFT FIXED						
LIGHT DUTY VEHICLE LIFT						
Maintenance Bay		18,000 2-post lift	1	14450	N	\$12,000
Maintenance Bay	MB-2	12,000lbs 2-Post Lift	1	14450	E	\$2,500
Maintenance Bay	MB-3	6-Post Mobile Lift (each post 18kbs)	1	14450	N	\$63,867
HEAVY DUTY VEHICLE LIFT MOBILE						
BRIDGE CRANE						
OVERHEAD LUBRICATION SYSTEM						
Maintenance Bay	MB-7	Lube Reel Bank	1	11145	N	
Maintenance Bay	MB-8	Oil Filter Crusher-Oberg	0	11145	N	
Maintenance Bay	MB-9	Waste Oil Caddie	1	11145	N	
Maintenance Bay	MB-10	Oil Filter Drain Box	1	11145	N	
Maintenance Bay	MB-11	Waste oil Pump Out station	1	11145	N	
Maintenance Bay	MB-12	Waste Anti-Freeze Pump Out station	1	11145	N	
Maintenance Bay	MB-13	Waste Fluid High Level Alarms	1	11145	N	
Fluid Storage Room	FS-1	500 Gal Waste Oil Tank	1	11145	N	
Fluid Storage Room	FS-2	55 Gallon Drums	6	11145	N	
Fluid Storage Room	FS-3	Wall Mount Lube Pumps	6	11145	N	
Fluid Storage Room	FS-4	120 Gal Tank waste antifreeze tank	1	11145	N	
Fluid Storage Room	FS-5	Spill pallets for Drums	1	11145	N	
Fluid Storage Room	FS-6	280 gal. 5w-30	1	11145	N	
Fluid Storage Room	FS-7	280 gal.15w-40	1	11145	N	
Fluid Storage Room	FS-8	280 Gal Hydraulic oil	1	11145	N	
Fluid Storage Room	FS-9	portable gear lube	1	11145	N	
Fluid Storage Room	FS-10	Portable Grease	1	11145	N	
EXHAUST REMOVAL SYSTEM						
Maintenance Bay	MB-5	Vehicle Exhaust Fans & Reels	1	15830	N	\$7,500
MISCELLANEOUS SHOPS AND SUPPORT EQUIPMENT						
Maintenance Bay	MB-6	25 Ton Hydraulic Shop Press	1	11000	N	\$0
Maintenance Bay	MB-15	Bench Vise - wilton	2	12405	N	\$1,300
Maintenance Bay	MB-17	Parts Washer	1	11000	N	\$0
Maintenance Bay	MB-18	2000lbs table lift	1	12405	N	\$10,000
	TS-1	Tire Maintenance Machine	1	12405	E	\$1,000
	TS-2	Truck Tire Balancer	1	11000	E	\$1,000
	WB-1	Portable Weld Fume Extractor	1	12405	N	\$6,000
	WB-2	10-Ton Anchor Pots	1	12405	N	\$2,370
	WB-3	Plasma Cutter	1	12405	N	\$2,400
	WB-4	Bench Grinder	1	12405	N	\$245
	WB-5	Portable Welding Screens	2	12405	N	\$300
	WB-6	MIG Welder	1	11000	N	\$2,500
	WB-7	Drill Press -Heavy Duty	1	12405	N	\$3,400
	WB-8	Arc Welder	1	11000	N	\$2,500
Hydraulic Hose Shop	HS-2	Hydraulic Hose Crimp Machine - portable	1	12405	N	\$3,000
Hydraulic Hose Shop	HS-3	Hydraulic Hose Saw	1	12405	N	\$3,000
Highway Shops	HWS-1	New Chop Saw	1	12405	N	\$350
	SS-4	Bench Vise	1	12405	N	\$135
STORAGE SHELVING / BENCHES / RACKS						
Maintenance Bay	MB-14	Steel Workbench w/ Casters	6	12405	N	\$600
Maintenance Bay	MB-16	Flammable Cabinets - 45 Gal	2	12405	N	\$625
Parts Storage	PS-1	Parts Shelving - 6'	9	12405	N	\$600
Parts Storage	PS-2	Small Bin Shelving	2	12405	N	\$265
Parts Storage	PS-3	Large Bin Shelving	2	12405	N	\$1,400
Parts Storage	PS-4	wall mounted metal cabinets	3	12405	N	\$120
	TS-4	Parts Shelving - 6'	1	12405	N	\$600
	TS-5	Tire storage rack (small Tires)	1	12405	N	\$330
	TS-6	Tires Storage Rack (Large Tires)	1	12405	N	\$300
	WB-8	Cantilever Rack	0	12405	N	\$1,101
	HS-1	Hydraulic Hose Reel Rack	1	12405	N	\$215
	SS-1	Vertical sign storage rack (rolled up signs)	1	12405	N	\$240
	SS-2	Sign Storage Rack	1	12405	N	\$200
Highway Shops	HWS-3	Steel Workbench w/ Casters & Elec. Shelf	4	12405	N	\$811
Total						\$19,069
						\$23,836

TOTALS	\$223,736	\$316,566
--------	-----------	-----------

TOWN WANTS	Relocation cost shown
TOWN HAS - to be relocated	