



ssrcoop.info

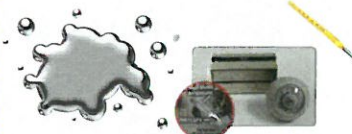
Toxic/Hazardous



Automotive Fluids



Mercury Products



Too bad for the trash?

Bring it to a SOUTH SHORE RECYCLING COOPERATIVE HOUSEHOLD HAZARDOUS WASTE COLLECTION

FALL 2017

9 am-1 pm

- 9/16 Hanson/Abington/Whitman**, 224 High St., Hanson
- 9/23 Hull**** *Location to be confirmed, check website call or in Sept.*
- 9/30 Hanover/Norwell/Rockland **** Hanover Transfer Station, 118 Rockland St. (Rt. 139)
- 10/21 Plymouth DPW**, 169 Camelot Dr.
- 11/4 Weymouth DPW**, 120 Winter St.
- 11/18 Middleboro** Town Hall, 10 Nickerson Ave.

****** usable latex paint accepted at these collections only. See over for details and options

☠ **Host/co-host** towns, and towns listed at right with an **"*"**, subsidize attendance of their own residents. *Proof of residency is required at event.*

☠ Visitors from the other towns listed at right may attend events at their town's expense **WITH AUTHORIZATION FORM** from their town's Haz Waste coordinator. Subsidized quantities may be limited by the town. *Proof of residency is required at event.*

☠ Visitors **without an authorization form** bring a check to Stericycle Environmental: \$26 per 10 gallons liquid (container size) or 20 lbs. solid material, \$48 per 25 gal or 50 lbs.

☠ Commercial generators contact Amanda at Stericycle, **617.852. 3086** to prearrange collection and payment.

ABINGTON
COHASSET*
DUXBURY*
HANOVER
HANSON
HINGHAM
HULL
KINGSTON
MIDDLEBORO*
NORWELL*
PLYMOUTH
ROCKLAND*
SCITUATE
WEYMOUTH*
WHITMAN

* residents do not need authorization form

SEE BACK FOR MATERIALS ACCEPTED



SOUTH SHORE RECYCLING COOPERATIVE

Keep us OUT of the Trash!
We're too BAD for the Trash

Accepted at all events:

From the workbench:

oil based paint and stains *
hobby/artist supplies
photography chemicals
fiberglass resins
adhesives
solvents

From the garage:

flammable liquids and aerosols
gasoline
motor oil mixtures
automotive fluids*
tire and carburetor cleaners, degreasers
marine and auto paints

From the shed:

pesticides, herbicides, fungicides
fertilizers containing pesticides
pool chemicals
cesspool cleaners
wood preservatives

From the house:

mercury, including thermometers
and thermostats *
drain cleaners
moth balls and crystals
hazardous cleaners and polishes
poisons
acids and bases

Accepted at some events:

motor oil*
antifreeze*
fluorescent tubes*
compact fluorescents *
rechargeable batteries *
latex paint **
flares

Asbestos: **CALL AHEAD 781.329.8318**

Materials not accepted include:

industrial waste
radioactive materials (*smoke detectors may be disposed in trash*)
pathological and medical waste
pressurized gas cylinders *
lead acid (automotive) batteries *
explosives (*contact your fire department*)

*** These materials are collected regularly by many retailers and/or towns**

Latex paint is messy,
but not hazardous



**** If your paint is still usable** (stored indoors, smooth, not smelly), The Paint Exchange will accept at the ** events. TPE also accepts it at their Rockland site to be recycled into new paint for \$2.

Go to www.RecycleReuseRepaint.com or call **339.214.8462** for more details.

If your paint's not that great: remove lid. Air dry or absorb with cat litter or paint hardener, and dispose with trash.

Bring chemicals in labeled, covered containers

Questions? Go to ssrcoop.info, click on **HAZARDOUS WASTE , or call the South Shore Recycling Cooperative at **781.329.8318**.**